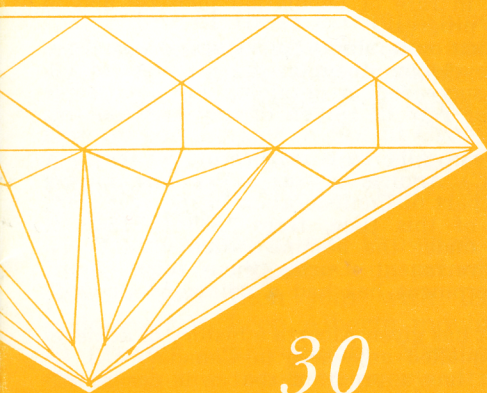


*Commemorating  
Alberta's  
Diamond Jubilee  
1905 - 1965*



*and*

*30*

*“diamond-studded” years  
with*

*Social Credit  
1935 - 1965*

# From

## The Premier

In the thirty years during which the Social Credit Government has worked to further the interests of its people, Alberta has become the leading Province in Canada.



**Hon. E. C. Manning**

Here, in our Province, we enjoy the highest standard of social services. Our roads, our hospitals, our homes for the aged are unsurpassed. Our educational facilities have expanded tremendously and are continuing to do so. We lead all Provinces in rate of population increase and in economic progress.

By retaining ownership of our natural resources, and by developing them in the interests of all, we have succeeded in obtaining for our people the highest rate of return of any area on this continent.

This year, Alberta is celebrating its 60th (or "Diamond") Anniversary as a Province, having become a part of Confederation in the year 1905. For half of this time, from 1935 to 1965, it has been under the administration of a Social Credit Government. During these thirty years, your Government has had a "diamond-studded" record:

(1) It has given Alberta a history of achievement unequalled anywhere in Canada.

(2) It has a program that will ensure Alberta's continued leadership.

(3) It has gained invaluable experience in the administration of your public affairs.

(4) Its goal has been, and will always be, to do everything in its power to make Alberta a model of a practical democracy operating at its best.

We invite you to join with us in maintaining and furthering this record. Let us together, continue our efforts to achieve the best possible results for alberta and her citizens.

Faithfully yours,

*E. C. Manning*

## EXPERIENCE

## DO YOU KNOW:

**THAT . . .** the Alberta Social Credit Government has been in power since September 3, 1935 and on September 1, 1965 will have administered the affairs of Alberta more years than all the other governments together in the history of this province.

**THAT . . .** Premier Ernest C. Manning has been Premier more than twenty-two years,  $2\frac{1}{2}$  times as long as any other and over 35% of the life of the province.

**THAT . . .** our invested reserves yield over 18 million dollars in interest annually.

**THAT . . .** the total earnings and profits of the Treasury Branches will amount to \$7,800,000 in 1965.

**THAT . . .** total assistance to municipal governments in 1965-66, will exceed 213 million dollars.

**THAT . . .** total assistance to municipalities and local authorities for the fifteen-year period ended March 1965 was \$1,672,950,390, and total oil revenues from sales, royalties and rentals to the end of March 1965 was \$1,625,000,000.

**THAT . . .** Alberta's Resources for the People Policy insures development of our resources for the benefit of the people without cost or risk to the taxpayer.

**THAT . . .** the Alberta Government recognizes agriculture as a basic factor of our booming economy and assists our farmers in every phase of operation that will add to their efficiency and well-being.

**THAT . . .** water resource and soil conservation is receiving urgent attention and the Department is co-operating with the Federal Government in an aggressive program to help solve the problem.

## PROGRESS

## DO YOU KNOW:

**THAT** . . . over 63,000 Alberta farms are now served with electric power, much of this through use of the REVOLVING FUND which has been up to 46 million dollars of Low Interest Money.

**THAT** . . . Alberta's total Field Crop, Livestock and Livestock Products yielded 862 millions of dollars in 1964.

**THAT** . . . tourist attractions and facilities have brought almost four million visitors into Alberta's National Parks in 1964.

**THAT** . . . picnic and campsite developments insure healthy and economical vacation premises and facilities for both citizen and tourist.

**THAT** . . . per Capita Public and Private investment is the highest of any province in Canada, a real indication of the tremendous climate of confidence in a Free Enterprise Way of Life.

**THAT** . . . Alberta has 6400 miles of Main and Secondary Highways of which over 4050 miles are paved.

**THAT** . . . Alberta has licensed over 600,000 vehicles for the year 1965.

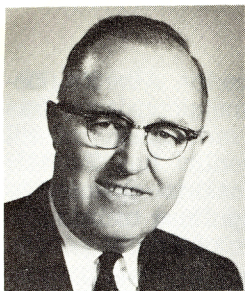
**THAT** . . . Alberta will spend over 67 million dollars in new Construction and maintenance in 1965-66.

**THAT** . . . through its Student-Assistance Program the Province makes it possible for every student to obtain the highest level of education that he desires.

**THAT** . . . Municipal Taxpayers of Alberta are paying a smaller percentage of the total cost of education than any other province in Canada.

## RESULTS





**Orvis A. Kennedy**

## **From The President**

Social Credit has formed the Government of the Province of Alberta continuously since 1935. Everyone must surely agree

that during this period of time the economy, progress and development has reached unprecedented heights. The purpose of this pamphlet is to acquaint you, as a citizen or a visitor to Alberta, with just a few of these accomplishments and with the underlying principles and policies which have made them possible.

If you are interested in more information on the subject of Social Credit, do not hesitate to contact our Head Office in Edmonton. Our staff is ready and willing to serve you.

If you reside in our Province, may we invite you to examine our principles and policies and then join with us as we endeavour to keep Alberta moving ahead to greater achievements. Membership in the League is open to every citizen who believes in the principles as herein outlined. Within our Association we have a strong Women's Auxiliary organization and an active Youth program.

The whole family can play a part in molding the future of Alberta with Social Credit, not only by support at election time, but throughout the years between.

Please write:

**ALBERTA SOCIAL CREDIT LEAGUE**

**9974 Jasper Avenue**

**Edmonton, Alberta**

**Phone 424-0568**

**POLICY**



## THE SOCIAL CREDIT WHEEL CROSS

The Circle stands for completeness; and in our symbol embraces all mankind regardless of position, race, colour, or creed.

The Cross stands for Christian principles, which applied to government and business will bring about a way of life that will recognize the rights of all individuals.

You will notice that the arms of the Cross in our symbol reach up to the top, down to the bottom, and out to each side. Social Credit principles will reach up to the man on the top, or down to the man on the bottom, or bring a better way of life to all people regardless of their station in life, their nationality, or their religious or political beliefs.

Published by  
Alberta Social Credit League  
9974 Jasper Avenue Edmonton  
Printed by Bradburn Printers Ltd.

**LEADERSHIP**