

Do Not Use
an × or +

VOTE FOR CITY COUNCIL

Do Not Use
an × or +

VOTE 1, 2, 3, ETC., IN ORDER OF YOUR CHOICE.



BROWN, G. M.



WEDDELL, A.



WILKINSON, MRS. ROSE.
(Re-election)

VOTE 1, 2, 3, ETC., IN ORDER OF YOUR CHOICE.

SOCIAL CREDIT CANDIDATES

(OVER)

(OVER)

Do Not Use
an × or +

VOTE FOR SCHOOL TRUSTEE

Do Not Use
an × or +

VOTE 1, 2, 3, ETC., IN ORDER OF YOUR CHOICE.

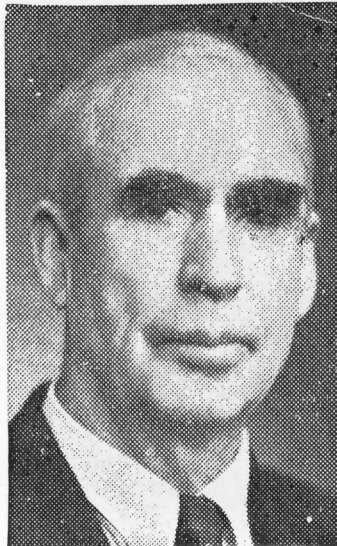


MRS. D. A. ANDERSON
(Re-election)

MORE
PRACTICAL
TRAINING



BETTER
HEALTH
SERVICES



R. A. HALL

VOTE 1, 2, 3, ETC., IN ORDER OF YOUR CHOICE.

SOCIAL CREDIT CANDIDATES

(OVER)

(OVER)

