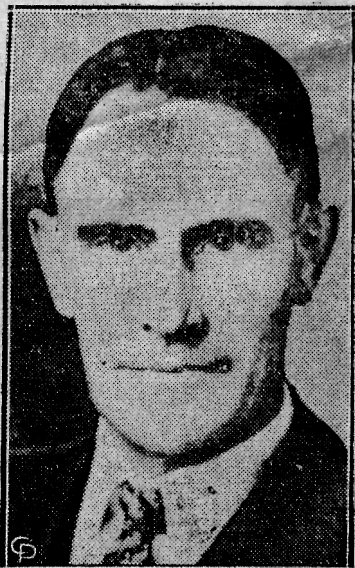


# Who's Who



## **J. H. BLACKMORE, M.P.**

John H. Blackmore, parliamentarian and school teacher. Edmonton residence, Corona hotel, (permanent address, Raymond, Alta.) Born March 27, 1890 at Sublett, Idaho. Son of William Morris Blackmore and Mary Christina Horne. Educated at Cardston public and high schools and University of Alberta, with B.A. in 1913 and later at Calgary normal school. Married on Aug. 19, 1915 to Emily Wooley, daughter of Mr. and Mrs. Leo Wooley, at Raymond. Has four sons, Harold W., Winston, David, John W., and five daughters, Viola, Fayila, Helen, Verla, Mernq. Started business career at Raymond with school board, and has continued with same organization as a teacher since coming to Alberta from Mormon settlement in Western U.S.A. in 1892. Was member of Raymond school board in 1916 and 1917. Was elected to House of Commons on Social Credit ticket in general election of 1935 and was chosen as the parliamentary leader of the Social Credit group of 17 members. He represents Lethbridge in the House.