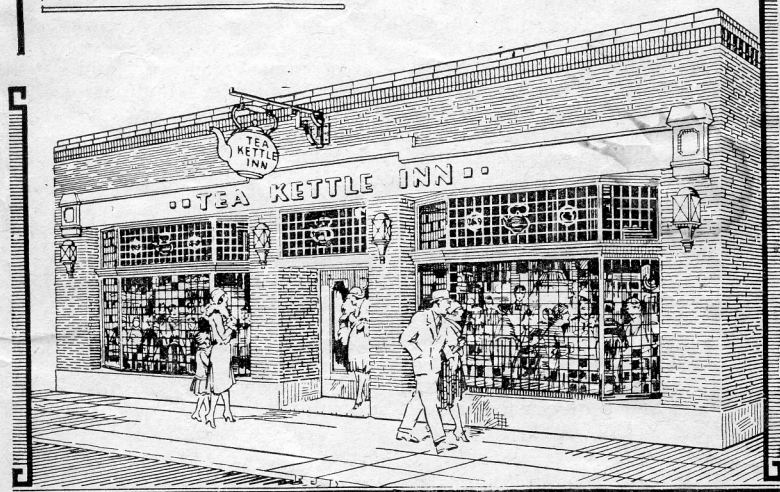


# Where to Go -- and What to Do While Visiting Calgary

— With the Compliments of

**TEA KETTLE INN** 220 SEVENTH AVE. W. CALGARY



The TEA KETTLE INN has catered to many celebrities, among whom were: Sir John Keanan, Lady Martin Harvey, the late Robert B. Mantell, Genevieve Hamper, Richard Keanan, Vilma Bankey, Fay Holden, Rod La Rocque, Matheson Lang, Gordon McLeod, Dan Leno, Georgie Wood, the late Sir Henry Lytton, Bertha Lewis, Leo Sheffield, Maurice Colbourne, Barry Jones. Members of such shows as the Canadian Dumbbells and local Stock Companies could always be found at the TEA KETTLE INN.

Tourists are welcome at the TEA KETTLE INN in their travelling clothes. First-class wash rooms are provided.

**CALGARY** was so named in 1876 by Col. Macleod, then commanding the Royal North West Mounted Police detachment at this point. He named it after his old home, Calgary, a small estate on the Isle of Mull in Scotland, the Gaelic interpretation of which is "Clear Running Water."

Calgary has become known the world over for its Exhibition and **Stampede** held each year during the second week in July. Among the outstanding features is the colorful street parade including Indians, cowboys, chuck wagons, floats, militia, etc. Contestants come to the Calgary Stampede from all over the world to vie for honors in the bronco riding, steer roping, chuck wagon races, etc. Approximately 250,000 visitors attend this event each year.

From a population of 428 registered in the first official census of Calgary at the time of incorporation in November, 1884, the city has developed into the largest and most important centre between Winnipeg and Vancouver, and now boasts a population of some 88,000 people. The business section and part of the residential district has spread over the valley which was the original townsite and has expanded over the surrounding heights until the City has covered an area of 26,368 acres.

Calgary is situated in the centre of a rich agricultural, mineral and livestock area and is the headquarters of one of the largest irrigation projects in the world. It is also a leading wholesale and jobbing centre, a very important railroad division and is rapidly growing as an industrial city. It has now some 166 manufacturing establishments with a combined capital investment of \$35,831,172.00 which give employment to between four and five thousand people whose wages and salaries amount to more than \$5,000,000.00 per annum.

The city is noted for its fine up to date retail stores where the best class of merchandise is carried. Tourists are invited to pay a visit to these stores and to see the fine displays of goods in all lines. They are assured of a cordial welcome. Visitors from the United States are reminded that they may take back with them goods to the value of \$100.00 DUTY FREE.

The Calgary Board of Trade (Chamber of Commerce) office is located in the Renfrew Building, 118 7th Ave. West, where information concerning the city and district will be cheerfully given.

# Rates and Hours of Business of Calgary's Different Restaurant

---

**The Tea Kettle Inn is open on week days  
from 8 a.m. till 8.30 p.m.**

## **BREAKFAST—**

A Delicious Club Breakfast is served with prices ranging from twenty-five cents and up. The employees who serve you radiate contentment. The whole environment is one to elevate your spirits, sending you forth refreshed with good food of the right character to maintain your health and enthusiasm at top peak.

## **LUNCH—**

The "Tea Kettle" serves a most attractive lunch with prices ranging from forty cents and up. Tourists, business men and business girls have declared this lunch to be most outstanding in value.

## **AFTERNOON TEA—**

The "Tea Kettle" has long been the favorite rendezvous in Calgary for afternoon tea. Novelty teas are served from time to time. The prices are most reasonable ranging from twenty-five cents and up.

## **DINNERS—**

The "Tea Kettle" has earned a reputation for dinners that has travelled far and wide. In the summer, people in small towns for miles around, drive in to Calgary to enjoy their dinner at the Tea Kettle Inn. Souvenir dinner menus have been mailed and taken back to all parts of the States. Recently a tourist wrote on a menu the following: "From Long Island to Lake Louise we found nothing nicer than the 'Tea Kettle'." Dinner prices range from forty cents and up.

---

## **Antiques—**

The House of Antiques Ltd., operated in conjunction is outstanding among the Antique Stores of Canada. It has been in operation for over twenty years, during which time it has imported annually thousands of dollars worth of antiques from England, furnishing many of the distinguished homes in Calgary and shipping to all parts of Canada and the United States. Tourists are welcome to inspect the fine display of Furniture, Georgian Silver, Brass, Pewter, Pictures, Prints, Bric-a-Brac, etc.

## WHERE TO GO—WHAT TO SEE IN AND AROUND CALGARY —

THE CALGARY DINOSAUR PARK AND ZOO is located on St. George's Island at Twelfth Street East and has a great variety of animals and birds of all kinds. A very fine exhibit of dinosaurs is a special attraction. It is open every day in the year without charge. Adjoining the Zoo there are playgrounds for children and picnic grounds. Motorists can reach St. George's Island by way of 9th Avenue East, turning north at 12th Street East.

GLENMORE DAM, recently constructed at a cost of nearly four million dollars, with its up-to-date filtration plant, gives Calgary an ample supply of good water for domestic and other purposes. There are restrictions regarding the visiting of the plants and buildings, but the drive and general view are very enjoyable. The dam can be reached by going south on 14th Street West to 34th Avenue, thence west and turning south again at 16th Street West.

THE INDUSTRIAL DISTRICT in East Calgary, is where a large number of the manufacturing plants are located, including flour mills, packing plants, stock yards, breweries, soap works, oil refineries, etc.

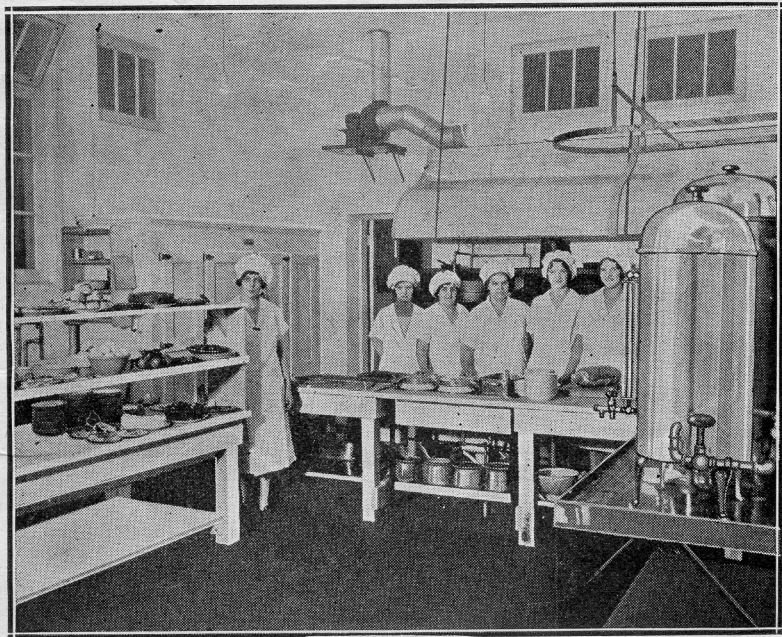
MEMORIAL PARK AND PUBLIC LIBRARY are at 12th Avenue and 2nd Street West.

MUNICIPAL GOLF LINKS open to visitors—fees 35c per game. Situated about 4 miles west of the centre of the city. Take 17th Avenue West and turn north at 26th Street West. A fine view of the city and also of the mountains is obtained from the Golf Club House.

Calgary has an up-to-date OPEN AIR SWIMMING POOL located at Mewata Park, 11th Street and 5th Avenue West.

INGLEWOOD BIRD SANCTUARY, located at the east end of Ninth Avenue, or just three miles east from the centre of the city. The Trans-Canada Highway passes along the north end of the Sanctuary, and the fifteen-acre feeding area, where most of the birds can readily be seen, is but a short distance from this highway on the west side of the Bow River.

Calgary has several popular restaurants. Outstanding among them is the Tea Kettle Inn. Below is a picture of a section of the kitchen, which is considered one of the most up-to-date and hygienic in Canada. Ten years ago the TEA KETTLE INN was forced to erect a new home, having outgrown its former premises after ten years' successful business. At that time the management, always believing the cleanliness of a kitchen to be an essential factor in successful restaurant management, spared no pains nor cost in the building and installation of equipment of their new kitchen.



In the foreground is Mrs. Mildred Snowden, dietitian, and in the background some of the staff of the famous "TEA KETTLE" expert women cooks. Mrs. Snowden (sister of Horace King, Managing Director), is responsible for the supervision of all the cooking at the Tea Kettle Inn. She also arranges the catering for Private Parties, Banquets and special Wedding Parties.

## MOTOR DRIVES

A beautiful drive is along the North Hill Boulevard from which a splendid view of the Canadian Rockies is obtained, taking in at the same time the North Hill Residential district. This can be reached by travelling north on Centre Street and turning west at 7th Avenue.

A pleasant drive is through the Elbow Park, Rideau and Roxboro residential districts located in the south-west part of the city. By going south on 4th Street West and crossing the bridge over the Elbow River, Roxboro and Rideau are reached. To reach Elbow Park turn west at 4th Street West and Mission Bridge and the highway parallels the Elbow River.

Another interesting drive is through the Mount Royal residential district which is located to the south of 17th Avenue from 6th Street West to 14th Street West.

In going to the Municipal Golf Links one can drive through the Royal Sunalta residential district by turning north off 17th Avenue at Scarboro Avenue.

**NEW AIRPORT**—The new airport just recently completed is well worth a visit. It covers 640 acres of land and has hard surfaced runways and all modern airway transportation facilities including beam, radio, telephone, illumination for night flying and complete meteorological service. It is on No. 1 Highway just beyond the City limits, about six miles north of the main business section.

**BOWNESS PARK** is eight miles west of the city. Most of the highway is located close to the Bow River and makes a delightful motor drive. Swimming, boating, dancing and other recreations are provided at the park; also picnic grounds and refreshment booths.

**TURNER VALLEY OIL AND GAS FIELD**—Has attracted wide attention in both the United States and Canada and in other countries. Visitors should, if possible, make a trip to Turner Valley and see the developments going on there. The field covers a large area and new wells are being drilled in different sections of the valley. The Valley is one of the show places of Alberta. It can be reached by two good roads. Turner Valley has more than doubled its previous crude oil producing area and has now established a probably two hundred million barrel recoverable crude reserve. In 1937 Turner Valley produced a total of 2,995,025 barrels of high grade oil from wells that averaged approximately 7,000 feet in depth. In 1939 the production was 7,152,000 barrels of crude oil, and the production for the field including crude oil, naphtha and absorption plant products totalled 7,484,115 barrels.